

RMC L-multistage hydraulic steel cylinder

- The stroke of RMC-L series are higher than RMC series

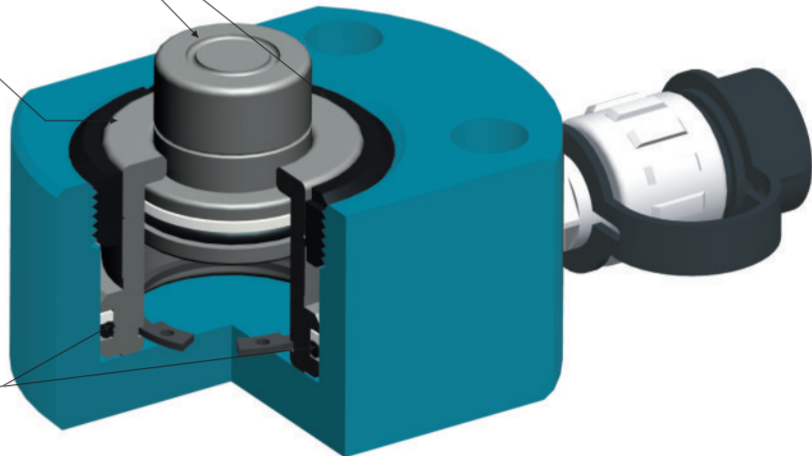


DESCRIPTION OF PARTS

1.Principal axis
 (avoid axis break when it is overloading)

2.Stopping ring
 (to protect the cylinder when the stroke get to top,
 absorb heaviness on the other side.)

3.O-ring great effect for seaking
 and hold longevity



Item.no	Output (t)	Stroke (mm)	Effactive area (cm ²)	Oil capacity (l)	Height of Product (mm)	Extended Height (mm)	Outside dia (Φ mm)	Bore dia (Φ mm)	Principal axis Dia (Φ mm)	Weight (kg)
RMC-101L	10	25	11.3	0.022	47	74	81x56	43	38	1.5
RMC-201L	20	26	19.6	0.041	52	80	100x77	60	53	2.7
RMC-301L	30	53	33.1	0.058	63	118	115x95	75	63	4.2
RMC-501L	50	64	56.7	0.113	69	135	138x115	95	85	7.2
RMC-1001L	100	75	95	0.225	86	163	185x160	130	110	15