



Make It Easy



JOY311MC
Three Phase Prepaid Electricity Meter

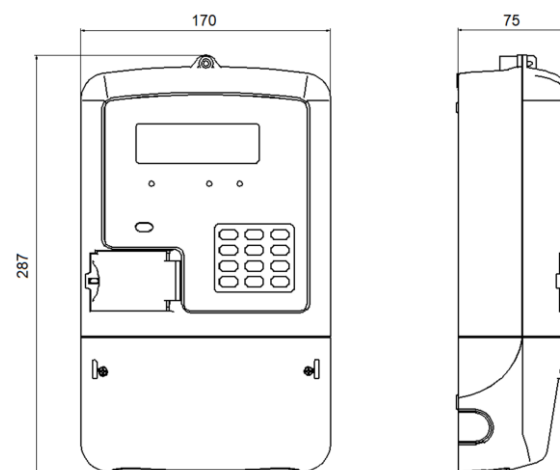
DESCRIPTION

JOY311MC Three Phase Keypad Prepaid Electricity Meter is a new developed CT (Current Transformer) operated meter, which can be provided singly or with the whole solution of meter, CT, and contactors together assembled in a meter box.

It is suitable for residential and commercial applications. Credit and management data is transferred from a point of sales (POS) to the meter via a 20-digit numeric token that is generated using the Standard Transfer Specification (STS) encryption protocol and entered into meter via a keypad.

FEATURES

- ▶ Suitable for commercial metering
- ▶ Complete set of solution of CT meter
- ▶ Keypad with audible and text feedback
- ▶ Adjustable audio and visual low credit warning level
- ▶ Significant Reverse Energy (SRE) detection
- ▶ Magnetic interference detection
- ▶ Easy switch between prepayment and post-payment option
- ▶ Automatic diagnosis of various faults includes contactor fault, memory devices fault, etc.
- ▶ Optional configuration: individual JOY311MC or integrated with distribution box
- ▶ STS compliant
- ▶ Terminal cover detection
- ▶ Over-load protection
- ▶ No-load protection
- ▶ External circuit breaker



TECHNICAL SPECIFICATIONS

| Item | Parameter | |
|----------------------------------|--|---|
| Nominal Voltage | 3x120/220/230/240V | |
| Operating Range | 70% to 130% of Un | |
| Frequency Range | 50/60Hz | |
| Base Current (Ib) | 1.5A | |
| Max Current (Imax) | 6A | |
| Constant | 8000 imp/kWh | |
| Accuracy | Class 1 | |
| Starting Current | 4%Ib | |
| Max Withstand Voltage | 450V (48hr) | |
| Insulation Level | 4kV rms for 1 minute | |
| Voltage Circuit | ≤2W/10VA | |
| Current Circuit | ≤4.5VA@Ib | |
| Electrostatic Discharge | 16kV air discharge; 10kV contact discharge | |
| Immunity to Fast Transient Burst | 4kV | |
| Surge Immunity | 4kV or 6kV alternative | |
| Maximum Cable Size | Φ6 mm | |
| LCD | 8 digits+icons+2 digits (index) | |
| | Size:87mm x 34mm | |
| LED Indicator | Active: 8000 imp/kWh | |
| | COM: communication LED | |
| | Credit LED: low credit alarm with blinking | |
| Buzzer | Feedback on key press | |
| | Token accept or reject | |
| | Low credit alarm with beeps | |
| CIU Type (if split) | JOYU3 | |
| | 2-wire | |
| | Distance: over 200m | |
| Product Life | 15 Years | |
| Meter Weight | 1900g | |
| Installation | Indoor or outdoor wall-mounted | |
| Meter Dimension | 287mm x 170mm x75mm | |
| Operating Temperature | -30~60℃ | |
| Storage Temperature | -40~70℃ | |
| Relative Humidity | ≤95%;annual mean 75% | |
| IP Rating | IP54 | |
| Standard Compliance | Meter Standard | IEC 62052-11, IEC62053-21, IEC 62055-31 |
| | Communication Standard | IEC62055-41, IEC62056-21 |