

Joymeter



Make It Easy



JOY121MP
Single Phase DIN-Rail Prepaid Electricity Meter



Tel:+86-573-83775889 Fax:+86-573-82237330 marketing@joymeter.com www.joymeter.com
No.88 West Zhengyang Rd, Jiaxing, Zhejiang, China

Joy Electronic Technology Co., Ltd

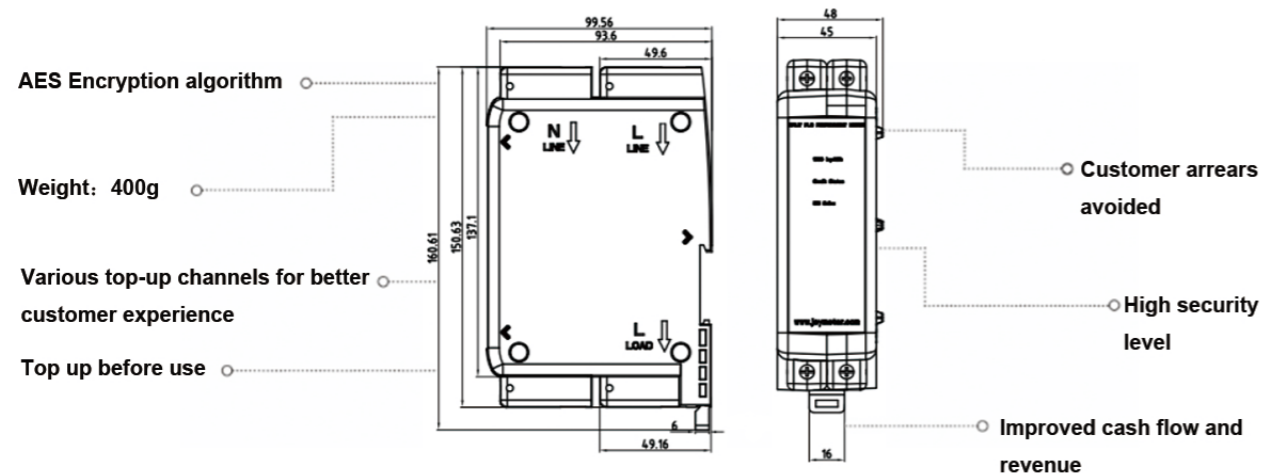
DESCRIPTION

JOY121MP, a DIN-Rail prepaid meter, consists of two parts, MCU (Metering Control Unit) and CIU (Customer Interface Unit).

The MCU can be installed outside the house in a meter box and communicates with the CIU via Power Line Carrier, while the CIU is installed in customer's house. The PLC communication uses existing household wiring and does not require additional wiring to the consumer's house.

FEATURES

- ▶ No-load protection
- ▶ Magnetic interference detection
- ▶ Improved sealing against ingress of insects
- ▶ Significant Reverse Energy (SRE) detection
- ▶ Easy switch between prepayment and post-payment option
- ▶ Optional configuration: JOY121MP+ CIU1 (PLC communication)
- ▶ Automatic diagnosis of various faults includes contactor fault, memory devices fault, etc.
- ▶ STS compliant
- ▶ Open cover detection
- ▶ Over load protection



TECHNICAL SPECIFICATIONS

Item	Parameter	
Nominal Voltage	120/220/230/240V	
Operating Range	70% to 130% of Un	
Frequency Range	50/60Hz	
Base Current (Ib)	5A/10A	
Max Current (Imax)	100A	
Constant	1000 imp/kWh	
Accuracy	Class 1	
Starting Current	4%Ib	
Max Withstand Voltage	420V (48hr)	
Insulation Classification	Double insulation	
Insulation Level	4kV rms for 1 minute	
Voltage Circuit	≤ 2W/10VA	
Current Circuit	≤ 1.0VA@Ib	
Electrostatic Discharge	16kV air discharge; 10kV contact discharge	
Immunity to Fast Transient Burst	4kV	
Surge Immunity	4kV or 6kV alternative	
User Interface(On CIU)	12 keys, international outlay standard with 0-9 numeric key, backspace and enter key	
External Interface	Optical port	
Disconnection Device	Internal Contactor	
Terminal Type	Moving Cage	
Maximum Cable Size	Φ8.5 mm	
LED Indicator	Pulse LED: 1000 imp/kWh Credit LED: low credit alarm with blinking Communication LED	
Communication With CIU	PLC Distance: over 200m	
Installation	MCU: DIN Rail mounted CIU: Wall mounted	
Product Life	15 Years Data retained over 20 years	
Operating Temperature	-30°C - 60°C	
Storage Temperature	-40°C - 70°C	
Relative Humidity	≤ 95%;annual mean 75%	
IP Rating	IP51	
Standard Compliance	Meter Standard	IEC 62052-11, IEC62053-21, IEC 62055-31 IEC62055-41, IEC62056-21
	Communication Standard	