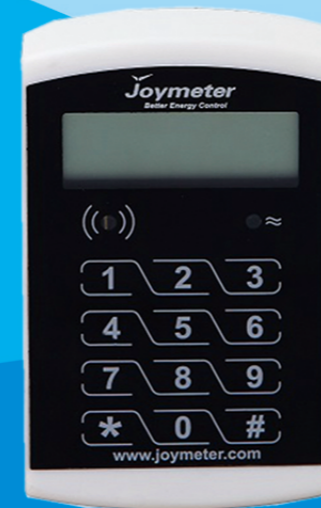


Joymeter



Make It Easy



CIU3
Customer Interface Unit



Tel:+86-573-83775889 Fax:+86-573-82237330 marketing@joymeter.com www.joymeter.com
No.88 West Zhengyang Rd, Jiaxing, Zhejiang, China

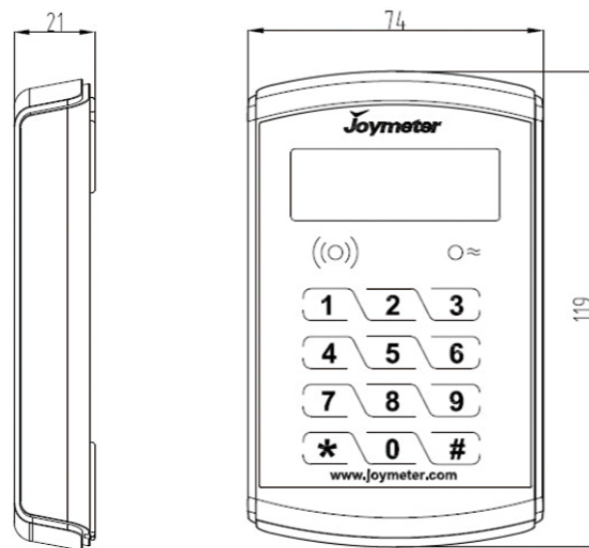
Joy Electronic Technology Co., Ltd

DESCRIPTION

JOYU3 is a compact customer interface unit with a touch type keypad. All the operations are typed in by touching the keypad. It can be installed on the wall of house separated from the meter. With its independent operation, JOYU3 is immune to any form of tampering on the customer interface unit.

FEATURES

- ▶ Touch type keypad
- ▶ Operation with audible and text feedback
- ▶ Adjustable audio and visual low credit warning level
- ▶ Power supply from communication cable
- ▶ Long communication distance
- ▶ Compact design
- ▶ Easy installation



TECHNICAL SPECIFICATIONS

Item	Parameter
Application Range	Widely compatible with JOY111M2, JOY211M2, JOY311M2
Working Voltage	2 wire: 12VDC
Communication Type	2 wire: 2 Non-polarized wires, 0.2mm ²
Communication distance	>200m
LCD	8 digits + icons + 2 digits (index) Size: 58mm x 26mm
LCD Displays	Synchronize automatically with the connected electricity meter Adjustable audio and visual low credit warning level
Pulse LED	1000 imp/kWh
Credit LED	low credit alarm with blinking
Buzzer	Feedback on key press Token accept or reject Low credit alarm with beeps
Installation	Indoor wall-mounted Connected to electricity meter via 2 non-polarized wires
Insulation Classification	Double insulation
Operating Temperature	-30°C - 60°C
Storage Temperature	-40°C - 70°C
Relative Humidity	≤ 95%; annual mean 75%
IP Rating	IP51
Product Life	15 Years
User Interface	12 keys, international outlay standard with 0-9 numeric key, backspace and enter key Touch sensitive keys with long life span
Operation	Operation with audible and text feedback
Weight	106g
Dimension	119mm x 74mm x 21mm